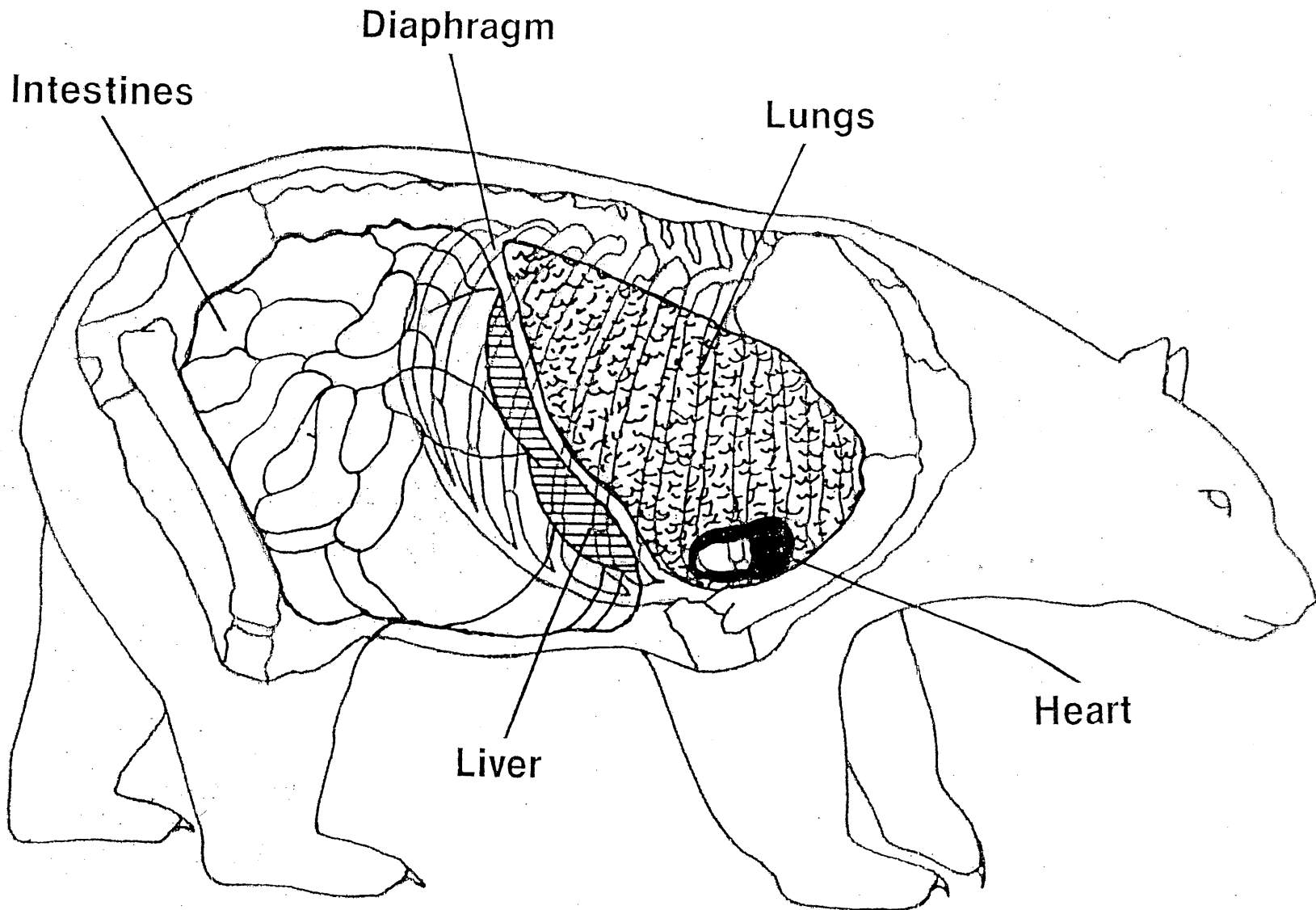
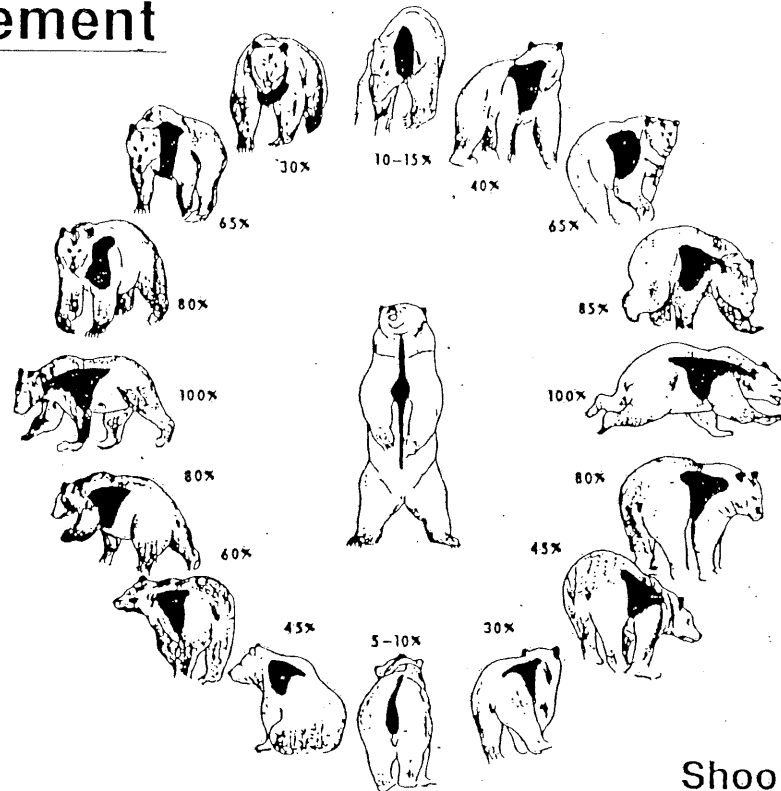


The Vital Organs Are Always Your Best Shot



Make Your First Shot Your Best Shot

Bear Shot Placement



Shooting Angles

The figure next to the Bear Indicates roughly the amount of vital area exposed at various angles.

Exposure of vital areas depends on the angle at which the Bear is turned toward the hunter. Broadside is the best possible angle with most (100%) of vital area exposed. Aim at the center of the shoulder!